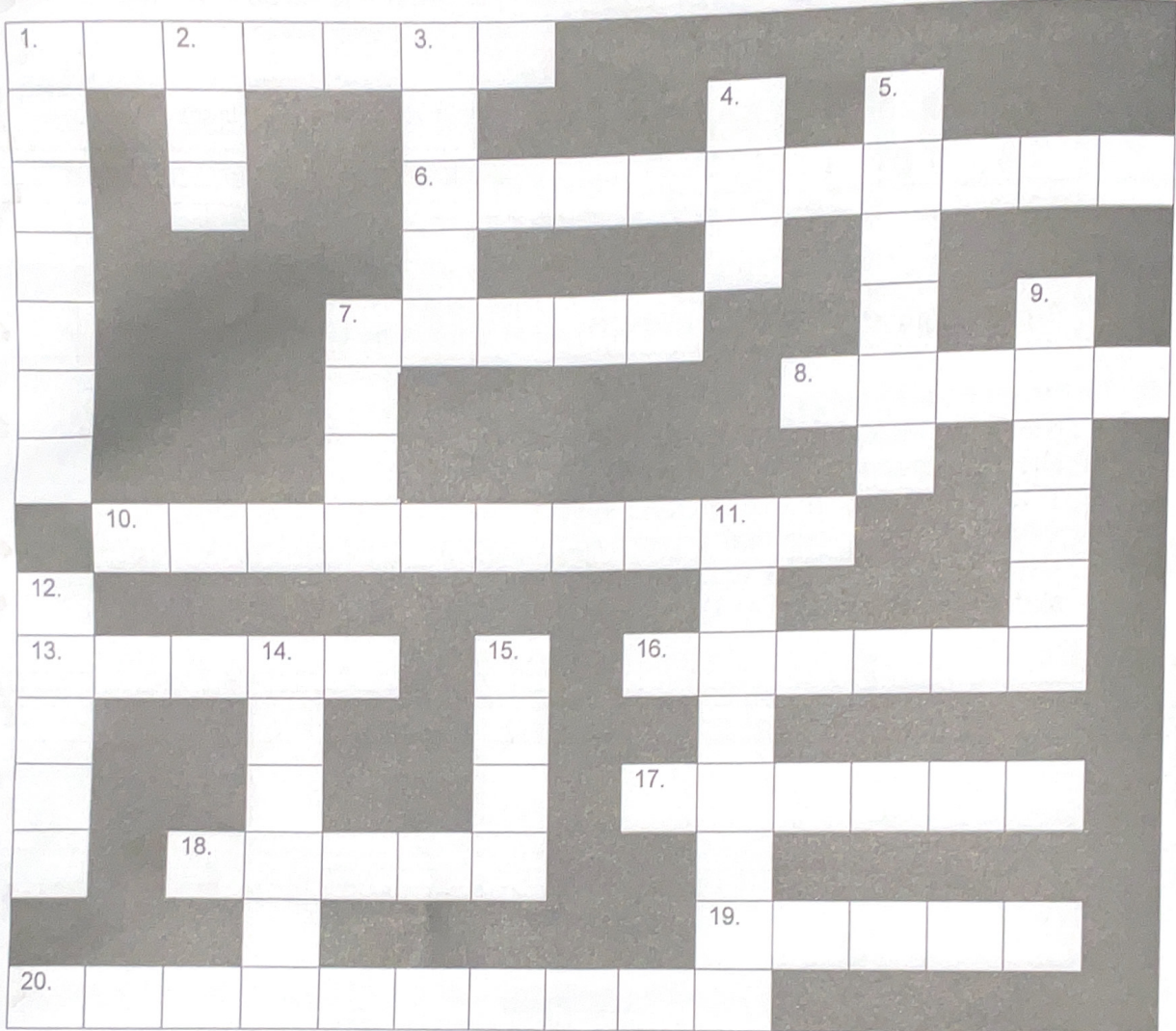


FUN SHEET



ACROSS

DOWN

- | | |
|-----------------------------------------------------------------------------------------------------------------------------------------------------------------------------------------------------------------------------------------------------------------------------------------------------------------------------------------------------------------------------------------------------------------------------------------------------------------------------------------------------------------------------------|--------------------------------------------------------------------------------------------------------------------------------------------------------------------------------------------------------------------------------------------------------------------------------------------------------------------------------------------------------------------------------------------------------------------------------|
| <p>1. A walking <i>tempo</i></p> <p>6. Italian words for "moderately soft" (<i>mp</i>)</p> <p>7. Scale degree one</p> <p>8. Don't give up so you can always say, "I _____."</p> <p>10. Italian word for "very soft" (<i>pp</i>)</p> <p>13. Three or more tones sounding together</p> <p>16. A slow <i>tempo</i> (see p. 50)</p> <p>17. A word that means "high" (see p. 1)</p> <p>18. When should you end your musical studies?</p> <p>19. A three-note chord (see p. 52)</p> <p>20. Italian word for "very loud" (<i>ff</i>)</p> | <p>1. A fast <i>tempo</i></p> <p>2. Abbreviation for <i>diminuendo</i></p> <p>3. The speed of a piece</p> <p>4. Bass means _____. (see p. 1)</p> <p>5. Gradually slow down</p> <p>7. A small city</p> <p>9. Smoothly connected (see p. 51)</p> <p>11. Moderate rate of speed</p> <p>12. Another name for the treble clef</p> <p>14. Play or sing it again</p> <p>15. A curved line written over or under notes in a phrase</p> |
|-----------------------------------------------------------------------------------------------------------------------------------------------------------------------------------------------------------------------------------------------------------------------------------------------------------------------------------------------------------------------------------------------------------------------------------------------------------------------------------------------------------------------------------|--------------------------------------------------------------------------------------------------------------------------------------------------------------------------------------------------------------------------------------------------------------------------------------------------------------------------------------------------------------------------------------------------------------------------------|



WORD BANK: *Adagio, Allegro, Andante, Chord, Dim., Fortissimo, G Clef, Legato, Low, Mezzo Piano, Moderato, Never, Pianissimo, Repeat, Ritard, Slur, Tempo, Tonic, Town, Treble, Triad, Tried*

Ledger Lines

Ledger lines extend the staff upward and downward, to allow notes to be written beyond the five lines of the staff. The following shows examples of notes that can be written above and below the staff using ledger lines.

A musical staff with a treble clef on the left and a bass clef on the right. The treble clef side has four notes on the staff (A, B, C, D) and four notes on ledger lines above (G, A, B, C). The bass clef side has four notes on the staff (C, D, E, F) and four notes on ledger lines below (B, C, D, E).

1. Draw a treble clef at the beginning of the staff and write the letter name of each note.

A musical staff with a treble clef at the beginning. There are four notes on ledger lines above the staff and four notes on ledger lines below the staff.

2. Draw a bass clef at the beginning of the staff and write the letter name of each note.

A musical staff with a bass clef at the beginning. There are four notes on ledger lines above the staff and four notes on ledger lines below the staff.

3. Draw the indicated notes. Use ledger lines to draw the specified number of pitches without duplication.

Example

A musical staff with a treble clef. Three notes are shown: one on a ledger line below the staff, one on the first line, and one on a ledger line above the staff.

3 Cs

A musical staff with a bass clef. Three notes are shown: one on a ledger line below the staff, one on the first line, and one on a ledger line above the staff.

3 Ds

A musical staff with a treble clef. Three notes are shown: one on a ledger line below the staff, one on the first line, and one on a ledger line above the staff.

3 As

A musical staff with a bass clef. Three notes are shown: one on a ledger line below the staff, one on the first line, and one on a ledger line above the staff.

3 Es

A musical staff with a treble clef. Two notes are shown: one on a ledger line below the staff and one on the first line.

2 Fs

A musical staff with a bass clef. Three notes are shown: one on a ledger line below the staff, one on the first line, and one on a ledger line above the staff.

3 Bs

A musical staff with a treble clef. Two notes are shown: one on a ledger line below the staff and one on the first line.

2 Gs

A musical staff with a bass clef. Three notes are shown: one on a ledger line below the staff, one on the first line, and one on a ledger line above the staff.

3 Cs

Week 7 Theory Academy Homework


NAME _____

Name the notes on the different staves. Be sure to look at the clef you are in!


Voice



V. ²



V. ³



On the staff below, practice drawing several Treble Clefs, Bass Clefs, and Alto Clefs.

For the rest of the page, come up with a countable rhythm similar to the ones we have done in class! Take a look at your notes if you get stumped.

Scale Degree Names Practice

Key: C G F D A

	C	G	F	D	A
Tonic					
Supertonic					
Mediant					
Subdominant					
Dominant					
Submediant					
Leading-Tone					

NAME _____

Using the WWHWWH pattern, write the specified major scales without using key signatures.

E major scale



B \flat major scale



C \sharp major scale



A \flat major scale



Specify the major key given the key signature.

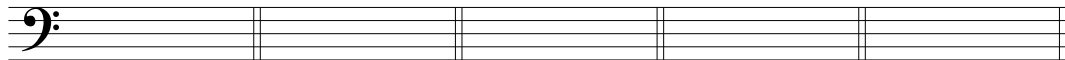


1 2 3 4 5 6 7

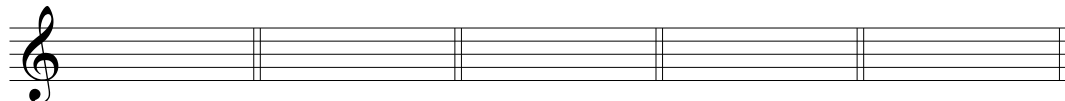


8 9 10 11 12 13 14

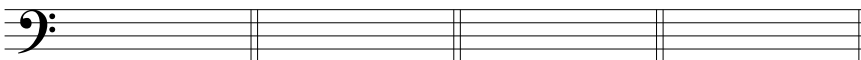
Write the major key signature for each key given. Be sure to use the correct order for sharps and flats.



1. E \flat major 2. C \sharp major 3. G \flat major 4. D major 5. F major



6. B major 7. D \flat major 8. F \sharp major 9. A \flat major 10. G major



11. C \flat major 12. A major 13. B \flat major 14. E major

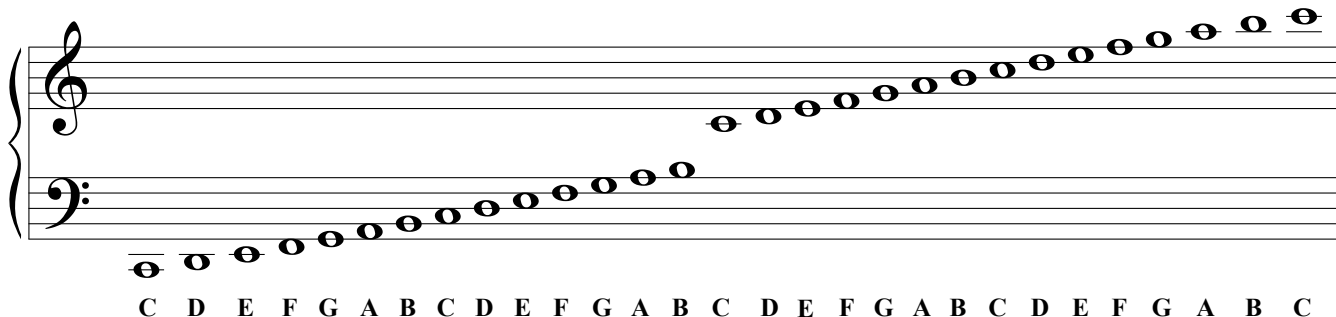
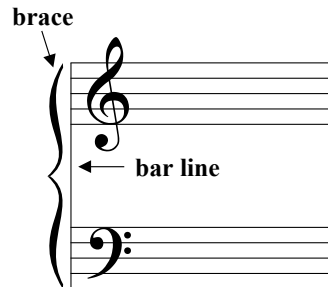
The Grand Staff

The **grand staff** represents the treble staff and bass staff joined together.

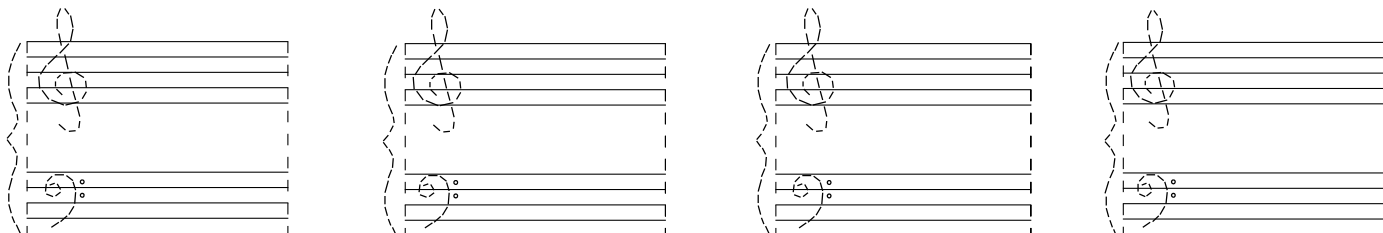
The brace is a curved line and bar line that combines the treble and bass staff.

A ledger line is a small line added to the note when it is either above or below the staff.

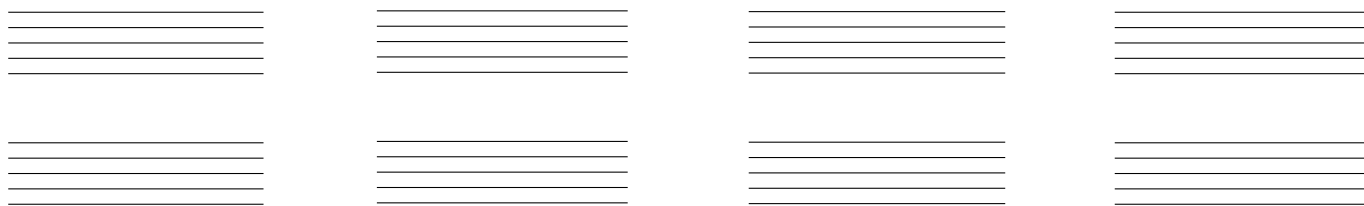
The Middle C note is on the ledger line that is between the treble and bass staff.



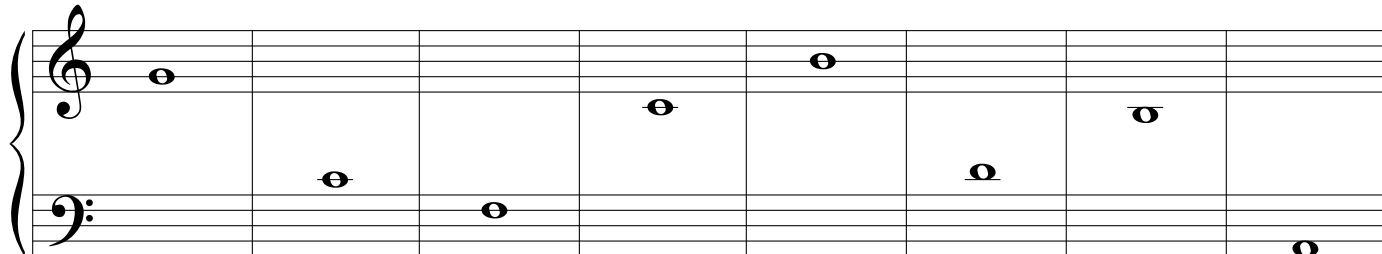
1. Draw the grand staff by tracing the braces, bar lines, and clefs.



2. Turn the following staff into grand staff by adding braces, bar lines, and clefs.



3. Write the letter name for each note.



— — — — — — — —

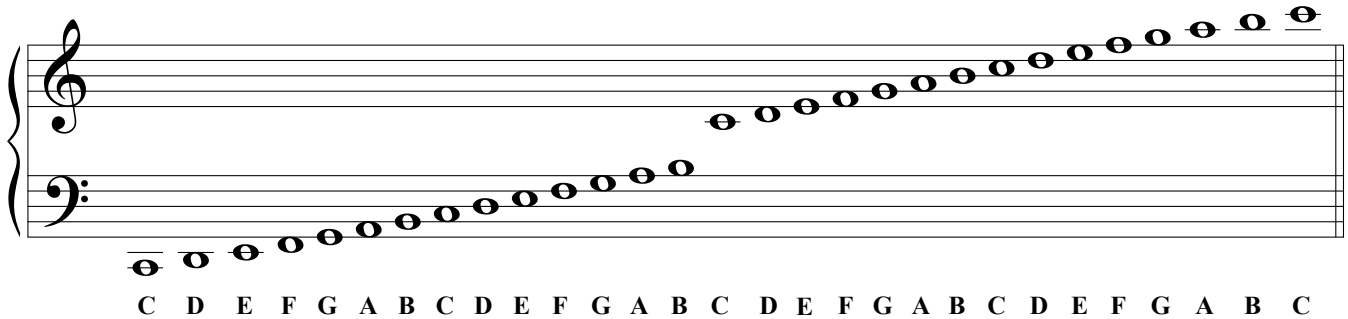
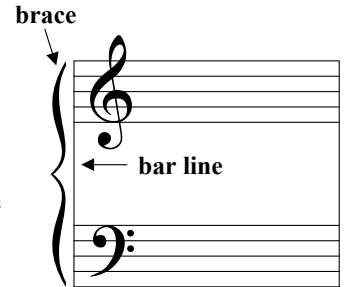
The Grand Staff

The **grand staff** represents the treble staff and bass staff joined together.

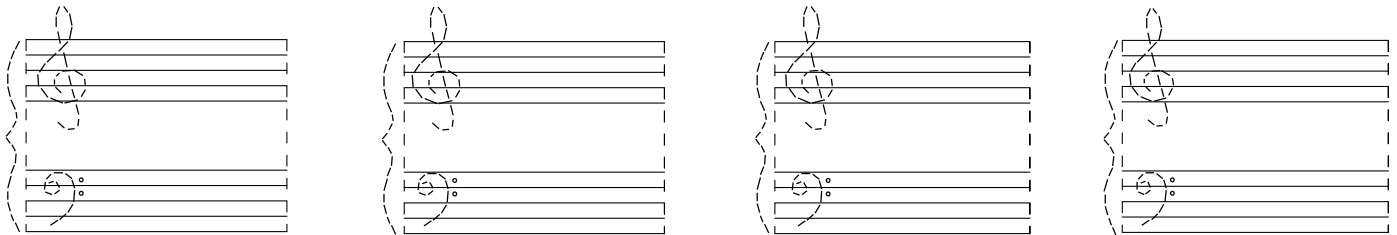
The brace is a curved line and bar line that combines the treble and bass staff.

A ledger line is a small line added to the note when it is either above or below the staff.

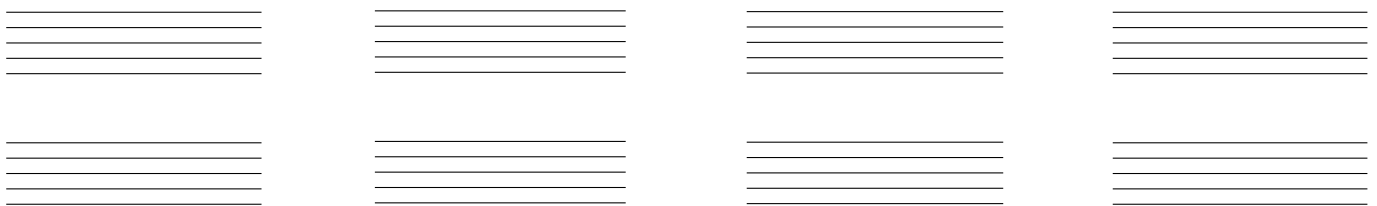
The Middle C note is on the ledger line that is between the treble and bass staff.



1. Draw the grand staff by tracing the braces, bar lines, and clefs.



2. Turn the following staff into grand staff by adding braces, bar lines, and clefs.



3. Write the letter name for each note.

